



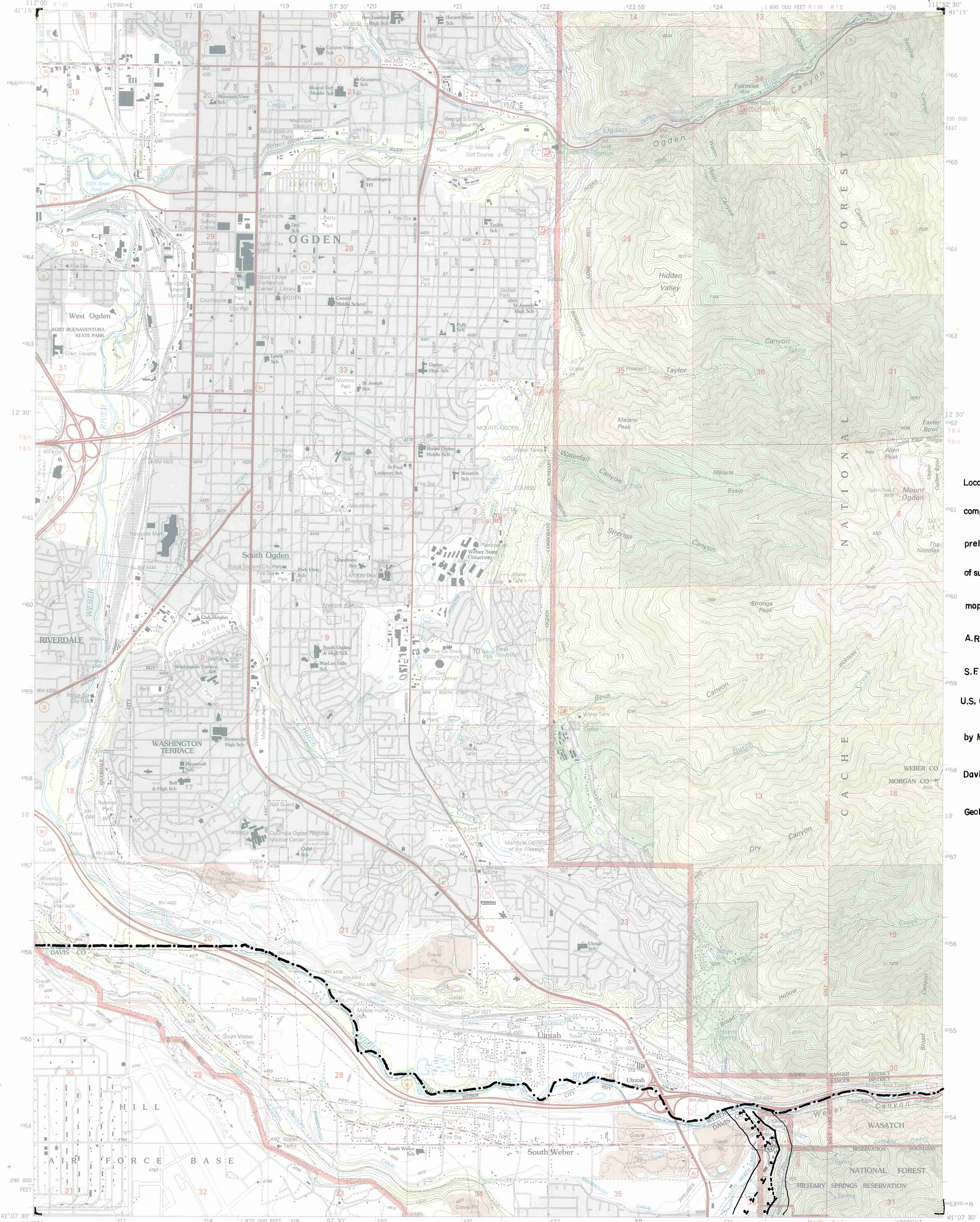
POTENTIAL SURFACE-FAULT RUPTURE SENSITIVE AREA OVERLAY ZONE - OGDEN QUADRANGLE

U.S. DEPARTMENT OF THE INTERIOR
U.S. GEOLOGICAL SURVEY

EXPLANATION

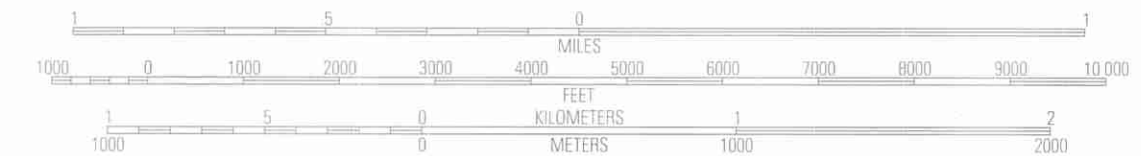
FAULT - - ball on down-dropped side
COUNTY LINE - - DASHED LINE
STUDY AREA BOUNDARY - - THICK BLACK LINE

OGDEN QUADRANGLE
UTAH
7.5-MINUTE SERIES (TOPOGRAPHIC)



Location of faults
compiled from
preliminary drafts
of surficial geologic
mapping by
A.R. Nelson and
S.F. Personius,
U.S. Geological Survey,
by Mike Lowe,
Davis County
Geologist, 1989.

Produced by the United States Geological Survey 1992
Revision by USDA Forest Service 1998
Topography compiled 1954. Planimetry derived from imagery taken 1997 and other sources. Public Land Survey System and survey control current as of 1998.
North American Datum of 1953 (NAD 27). Projection and 10 000-foot ticks: Utah coordinate system, north zone (Lambert conformal conic); Blue 1000-meter Universal Transverse Mercator ticks, zone 12.
North American Datum of 1983 (NAD 83) is shown by dashed corner ticks. The values of the shift between NAD 27 and NAD 83 for 7.5-minute intersections are obtainable from National Geodetic Survey NADCON software.
Non-National Forest System lands within the National Forest. Inholdings may exist in other National or State reservations.
This map is not a legal land line or ownership document. Public lands are subject to change and leasing, and may have access restrictions; check with local offices. Obtain permission before entering private lands.
Landmark buildings verified 2000.



1	2	3
4	5	6
7	8	

Interstate		Primary highway	
U. S.		Secondary highway	
State		Light-duty road	
County		Composition: Unspecified	
National Forest, suitable for passenger cars		Gravel	
National Forest, suitable for high clearance vehicles		Dirt	
National Forest Trail		Unimproved, 4 wheel drive	
		Trail	
		Gate; Barrier	

THIS MAP COMPLIES WITH NATIONAL MAP ACCURACY STANDARDS
FOR SALE BY U.S. GEOLOGICAL SURVEY, P.O. BOX 25286, DENVER, COLORADO 80225
A FOLDER DESCRIBING TOPOGRAPHIC MAPS AND SYMBOLS IS AVAILABLE ON REQUEST

OGDEN, UT
1998
NIMA 3666 III NW-SERIES V897

