



U.S. DEPARTMENT OF THE INTERIOR
U.S. GEOLOGICAL SURVEY



U.S. DEPARTMENT OF AGRICULTURE
FOREST SERVICE

PETERSON QUADRANGLE
UTAH
7.5-MINUTE SERIES (TOPOGRAPHIC)

SLOPE-FAILURE INVENTORY MAP - PETERSON QUADRANGLE

EXPLANATION

COUNTY LINE

LANDSLIDE BOUNDARY

DS= shallow failure,
chiefly debris slides
grading to debris flows

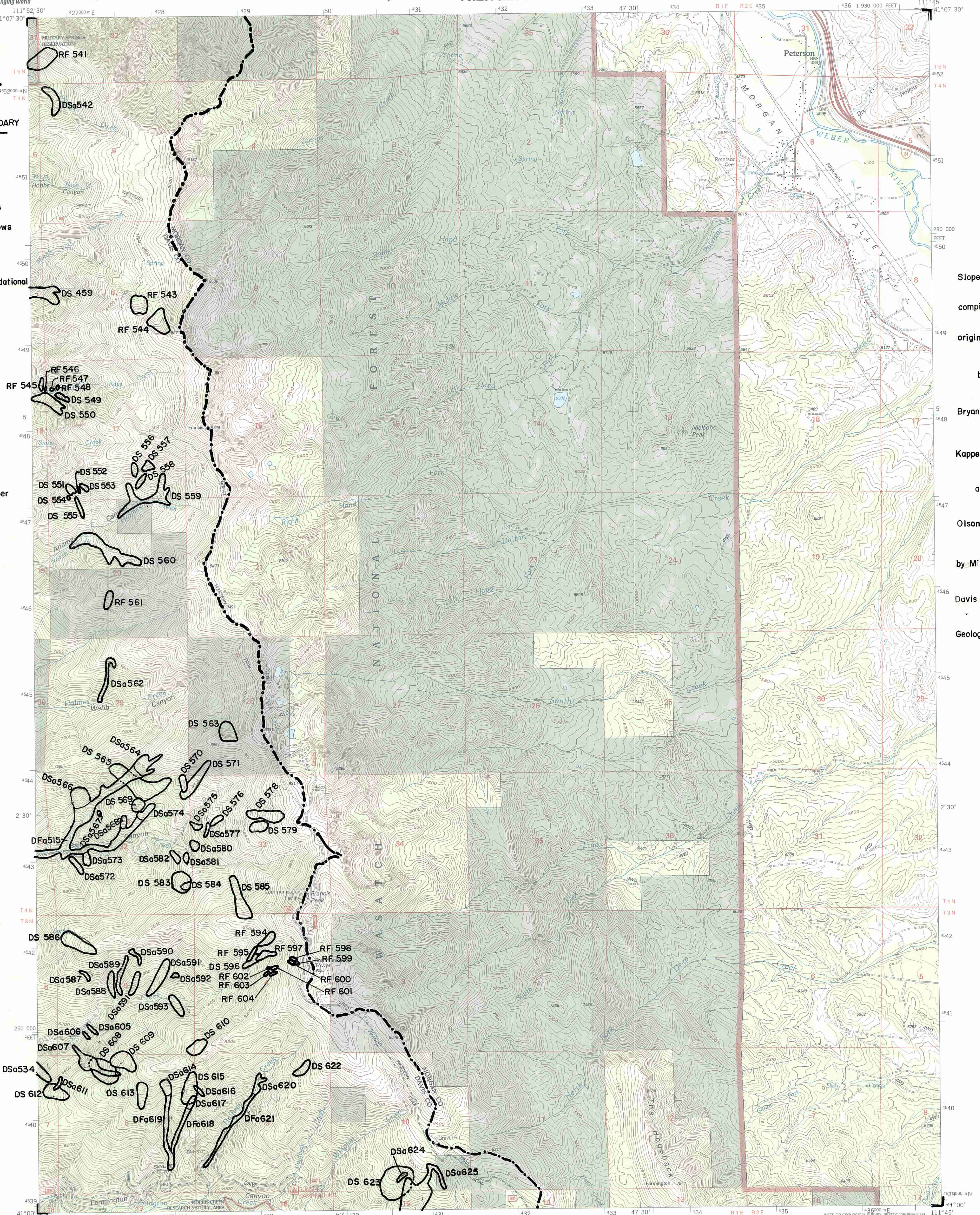
DF= debris flows, gradational
with debris slides

RF= rock slide,
rockfall area

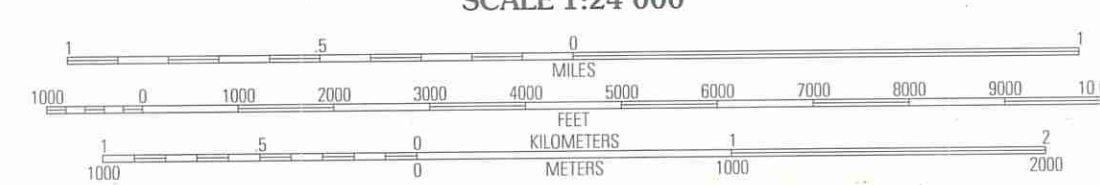
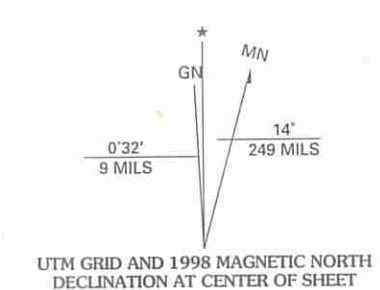
a= active (historic)

123 = inventory number
for slope failure

Slope failures
compiled from
original mapping
by
Bryant, 1984;
Kappesser, unpublished
and
Olson, 1981,
by Mike Lowe,
Davis County
Geologist, 1989.



Produced by the United States Geological Survey 1991
Revision by USDA Forest Service 1998
Topography compiled 1953. Planimetry derived from imagery taken 1997
and other sources. Public Land Survey System and survey control current
as of 1998
North American Datum of 1927 (NAD 27). Projection and 10 000-foot ticks:
Utah coordinate system, north zone (Lambert conformal cone)
Blue 1000-meter Universal Transverse Mercator ticks, zone 12
North American Datum of 1983 (NAD 83) is shown by dashed corner ticks
The values of the shift between NAD 27 and NAD 83 for 7.5-minute
intersections are obtainable from National Geographic Survey NADCON software
Inholdings may exist in other National Forest
Non-National Forest System lands within the National Forest
holdings may exist in other National or State reservations
This map is not a legal land line or ownership document. Public lands are
subject to change and leasing, and may have access restrictions; check
with local offices. Obtain permission before entering private lands



CONTOUR INTERVAL 40 FEET
SUPPLEMENTARY CONTOUR INTERVAL 20 FEET
NATIONAL GEODETIC VERTICAL DATUM OF 1929
TO CONVERT FROM FEET TO METERS, MULTIPLY BY 0.3048



Interstate		Primary highway	
U. S.		Secondary highway	
State		Light-duty road	
County		Composition: Unspecified	
National Forest, suitable for passenger cars		Paved	
National Forest, suitable for high clearance vehicles		Gravel	
National Forest Trail		Dirt	
		Unimproved; 4 wheel drive	
		Trail	
		Gate; Barrier	

1	2	3
4	5	6
7	8	

1 Ogden
2 Snow Basin
3 Dust Mountain
4 Kayville
5 Morgan
6 Farmington
7 Beautiful Peak
8 Porterville

PETERSON, UT
1998
NMA 3666 III SE-SERIES V897

THIS MAP COMPLIES WITH NATIONAL MAP ACCURACY STANDARDS
FOR SALE BY U.S. GEOLOGICAL SURVEY, P.O. BOX 25286, DENVER, COLORADO 80225
A FOLDER DESCRIBING TOPOGRAPHIC MAPS AND SYMBOLS IS AVAILABLE ON REQUEST

