

LANDSLIDE HAZARD MAP - OGDEN QUADRANGLE



U.S. DEPARTMENT OF THE INTERIOR
U.S. GEOLOGICAL SURVEY



U.S. DEPARTMENT OF AGRICULTURE
FOREST SERVICE

OGDEN QUADRANGLE
UTAH
7.5-MINUTE SERIES (TOPOGRAPHIC)

EXPLANATION

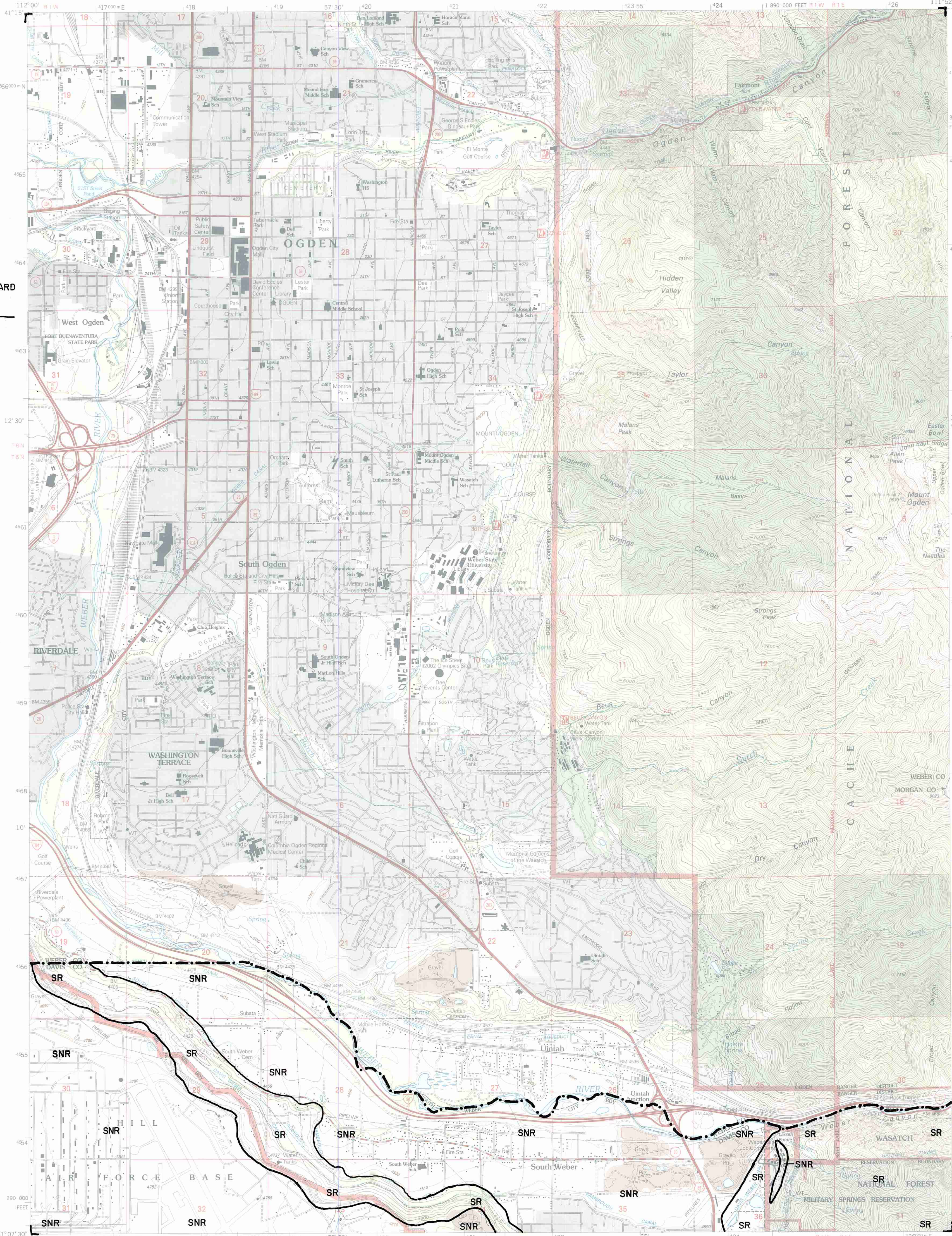
COUNTY LINE

LANDSLIDE HAZARD BOUNDARY

SNR=area where landslide-hazard special studies are not required.

SR= area where landslide-hazard special studies are recommended.

Landslide-hazard boundary compiled from slope and existing landslides by Mike Lowe, Davis County Geologist, 1989. For locations of historic and prehistoric landslides, see Slope-Failure Inventory Map - Ogden Quadrangle.



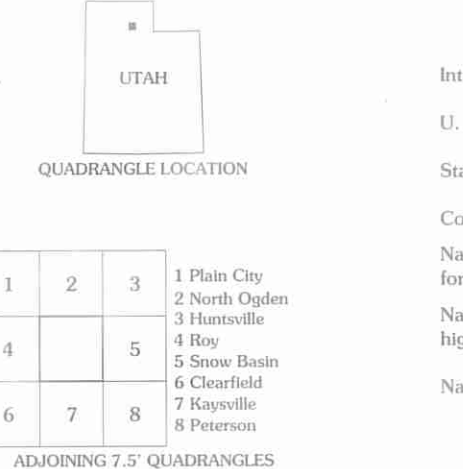
Produced by the United States Geological Survey 1992
Revision by USDA Forest Service 1998
Topography compiled 1954. Planimetry derived from imagery taken 1997 and other sources. Public Land Survey System and survey control current as of 1998.
North American Datum of 1953 (NAD 27). Projection and 10 000-foot ticks: Utah coordinate system, north zone (Lambert conformal conic).
Blue 1000-meter Universal Transverse Mercator ticks, zone 12.
North American Datum of 1983 (NAD 83) is shown by dashed corner ticks. The values of the datum between NAD 27 and NAD 83 for 7.5-minute intersections are obtainable from National Geodetic Survey NADCON software.
Non-National Forest System lands within the National Forest. Inholdings may exist in other National or State reservations.
This map is not a legal land line or ownership document. Public lands are subject to change and leasing, and may have access restrictions; check with local offices. Obtain permission before entering private lands.
Landmark buildings verified 2000.



SCALE 1:24 000

CONTOUR INTERVAL 40 FEET
SUPPLEMENTARY CONTOUR INTERVAL 10 FEET
NATIONAL GEODETIC VERTICAL DATUM OF 1929
TO CONVERT FROM FEET TO METERS, MULTIPLY BY 0.3048

UTM GRID AND 1998 MAGNETIC NORTH DECLINATION AT CENTER OF SHEET



| | |
|---|---------------------------|
| Interstate | Primary highway |
| U.S. | Secondary highway |
| State | Light-duty road |
| County | Composition: Unspecified |
| National Forest, suitable for passenger cars | Paved |
| National Forest, suitable for high clearance vehicles | Gravel |
| National Forest Trail | Dirt |
| | Unimproved; 4 wheel drive |
| | Trail |
| | Gate; Barrier |

THIS MAP COMPLIES WITH NATIONAL MAP ACCURACY STANDARDS
FOR SALE BY U.S. GEOLOGICAL SURVEY, P.O. BOX 25286, DENVER, COLORADO 80225
A FOLDER DESCRIBING TOPOGRAPHIC MAPS AND SYMBOLS IS AVAILABLE ON REQUEST



OGDEN, UT
1998
NIMA 3666 III NW-SERIES V897