

LANDSLIDE HAZARD MAP - KAYSVILLE QUADRANGLE



U.S. DEPARTMENT OF THE INTERIOR
U.S. GEOLOGICAL SURVEY



U.S. DEPARTMENT OF AGRICULTURE
FOREST SERVICE

KAYSVILLE QUADRANGLE
UTAH-DAVIS CO.
7.5-MINUTE SERIES (TOPOGRAPHIC)

EXPLANATION

LANDSLIDE-HAZARD

BOUNDARY

Area where

landslide-hazard

studies are

required.

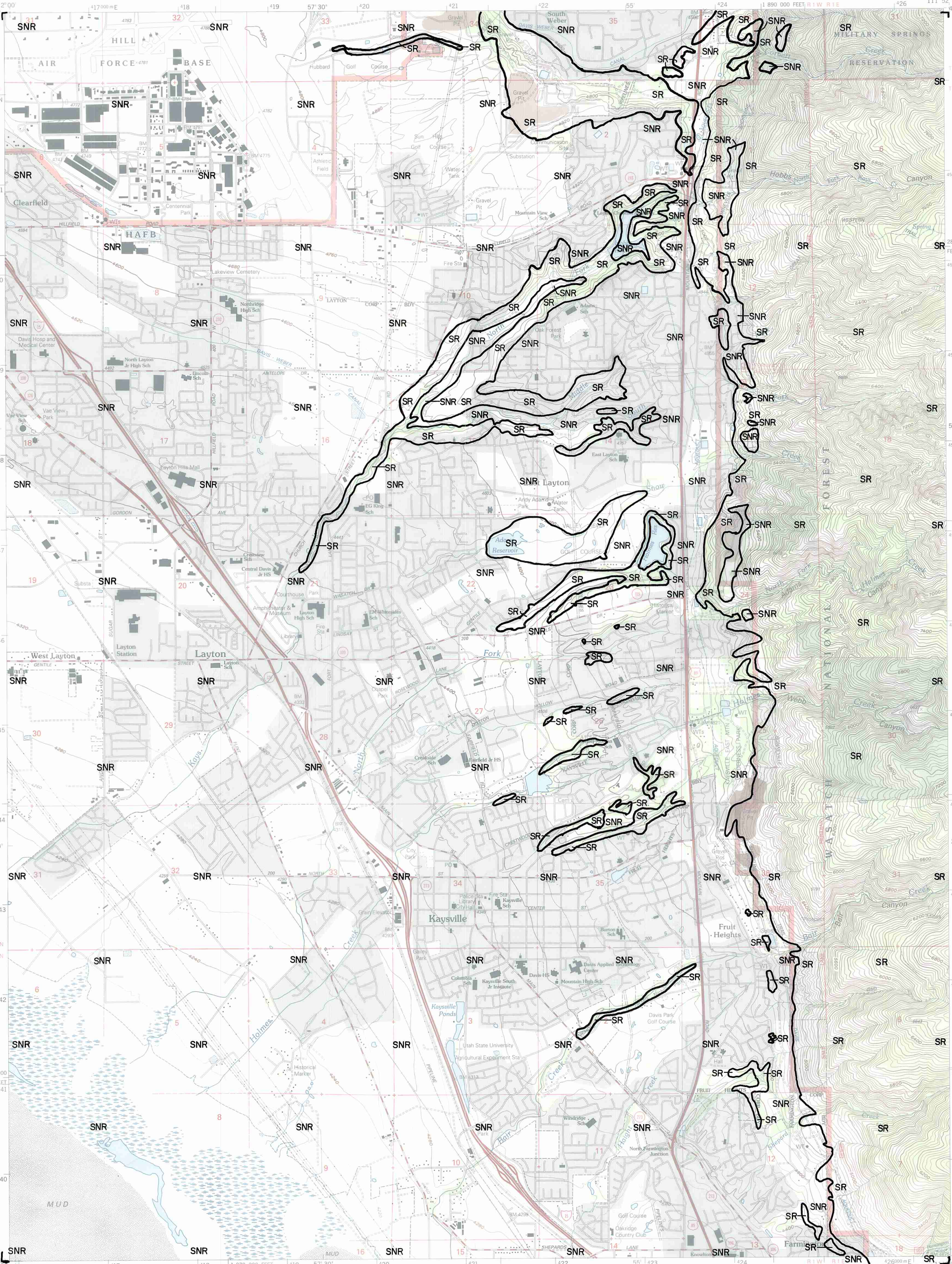
Area where

landslide-hazard

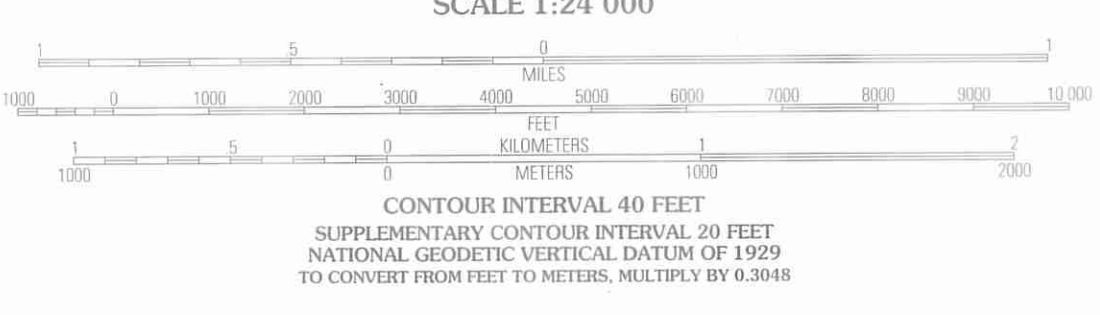
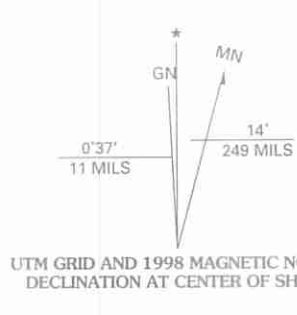
studies

recommended.

Landslide-hazard map compiled from slope and existing landslides by Mike Lowe, Davis County Geologist, 1989. For locations of prehistoric and historic landslides, see Slope-Failure Inventory Map - Kaysville Quadrangle.



Produced by the United States Geological Survey 1992
Revision by USDA Forest Service 1998
Topography compiled 1953. Planimetry derived from imagery taken 1997 and other sources. Public Land Survey System and survey control current as of 1998
North American Datum of 1927 (NAD 27). Projection and 10 000-foot ticks the values of the shift between NAD 27 and NAD 83 for 7.5-minute intersections are obtainable from National Geodetic Survey NADCON software
Non-National Forest System lands within the National Forest holdings may exist in other National or State reservations
This map is not a legal land line or ownership document. Public lands are subject to change and leasing, and may have access restrictions; check with local offices. Obtain permission before entering private lands
Landmark buildings verified 2000



Interstate	5	Primary highway	1
U. S.	10	Secondary highway	2
State	15	Light-duty road	3
County	20	Composition: Unspecified	4
National Forest, suitable for passenger cars	25	Paved	5
National Forest, suitable for high clearance vehicles	30	Gravel	6
National Forest Trail	35	Dirt	7
		Unimproved; 4 wheel drive	8
		Trail	9
		Gate; Barrier	10

THIS MAP COMPLIES WITH NATIONAL MAP ACCURACY STANDARDS
FOR SALE BY U.S. GEOLOGICAL SURVEY, P.O. BOX 25286, DENVER, COLORADO 80225
A FOLDER DESCRIBING TOPOGRAPHIC MAPS AND SYMBOLS IS AVAILABLE ON REQUEST

1	2	3	1 Roy
4	5	6	2 Oslen
7	8	9	3 Snow Basin
			4 Clearfield
			5 Peterson
			6 Saltair NE
			7 Farmington
			8 Beautiful Peak

KAYSVILLE, UT
1998
NIMA 3666 III SW-SERIES V897

