

**DEBRIS-FLOW HAZARD SPECIAL STUDY ZONE MAP - SALT LAKE CITY NORTH QUADRANGLE**

**EXPLANATION**

**COUNTY LINE**

**DEBRIS-FLOW HAZARD SPECIAL STUDY ZONE BOUNDARY**

**BOUNDARY OF DEBRIS SLIDES, DEBRIS FLOWS, AND YOUNGER HOLOCENE (ACTIVE) ALLUVIAL FANS**

**SNR=area where debris-flow special studies are not required.**

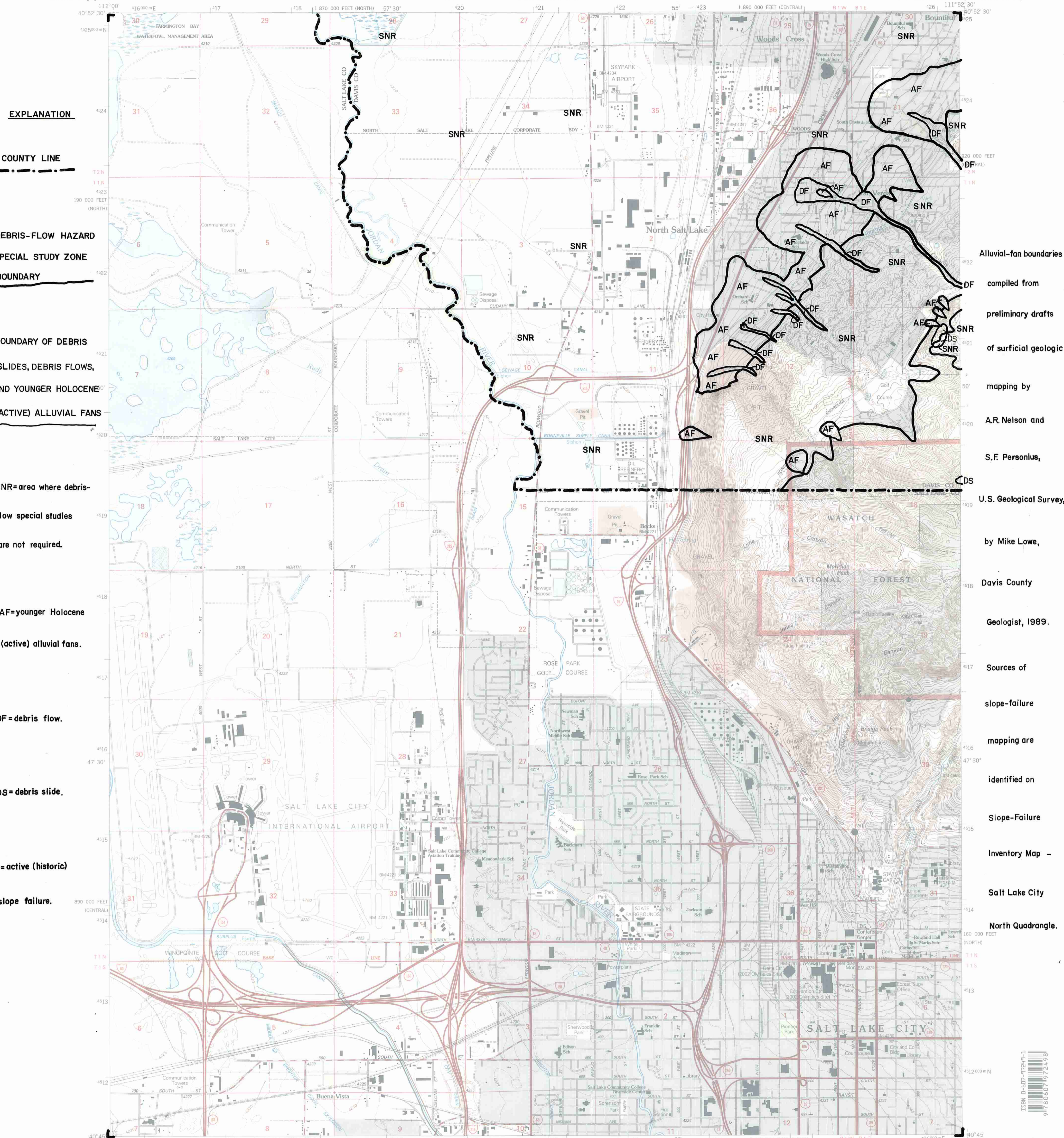
**AF=younger Holocene (active) alluvial fans.**

**DF=debris flow.**

**DS=debris slide.**

**a= active (historic) slope failure.**

Alluvial-fan boundaries compiled from preliminary drafts of surficial geologic mapping by A.R. Nelson and S.F. Personius, U.S. Geological Survey, by Mike Lowe, Davis County Geologist, 1989. Sources of slope-failure mapping are identified on Slope-Failure Inventory Map - Salt Lake City North Quadrangle.



SCALE 1:24 000



CONTOUR INTERVAL 20 FEET  
SUPPLEMENTARY CONTOUR INTERVAL 5 FEET  
NATIONAL GEODETIC VERTICAL DATUM OF 1929  
TO CONVERT FROM FEET TO METERS, MULTIPLY BY 0.3048

Produced by the United States Geological Survey 1975  
Revision by USDA Forest Service 1998  
Topography compiled 1950. Planimetry derived from imagery taken 1997 and other sources. Public Land Survey System and survey control current as of 1998

North American Datum of 1927 (NAD 27). Projection: Utah coordinate system, central zone (Lambert conformal conic) 10 000-foot ticks; Utah coordinate system central and north zones Blue 1000-meter Universal Transverse Mercator ticks, zone 12  
North American Datum of 1983 (NAD 83) is shown by dashed corner ticks  
The values of the shift between NAD 27 and NAD 83 for 7.5-minute intersections are obtainable from National Geographic Survey NADCON software  
Non-National Forest System lands within the National Forest Inholdings may exist in other National or State reservations  
This map is not a legal land line or ownership document. Public lands are subject to change and leasing, and may have access restrictions; check with local offices. Obtain permission before entering private lands  
Landmark buildings verified 2000

UTM GRID AND 2000 MAGNETIC NORTH DECLINATION AT CENTER OF SHEET



QUADRANGLE LOCATION

HIGHWAYS AND ROADS	
Interstate	Primary highway
U. S.	Secondary highway
State	Light-duty road
County	Composition: Unspecified...
National Forest, suitable for passenger cars	Paved
National Forest, suitable for high clearance vehicles	Gravel
National Forest Trail	Unimproved, 4 wheel drive
	Trail
	Gate; Barrier

1	2	3	1 Saltair NE
4	5	4 Saltair	2 Farmington
6	7	5 Fort Douglas	3 Bountiful Peak
		6 Magna	4 Saltair
		7 Salt Lake City South	5 Fort Douglas
		8 Sugar House	6 Magna

THIS MAP COMPLIES WITH NATIONAL MAP ACCURACY STANDARDS  
FOR SALE BY U.S. GEOLOGICAL SURVEY, P.O. BOX 25286, DENVER, COLORADO 80225  
A FOLDER DESCRIBING TOPOGRAPHIC MAPS AND SYMBOLS IS AVAILABLE ON REQUEST

SALT LAKE CITY NORTH, UT  
1998  
NIMA 3665 IV SW-SERIES V897

