

POTENTIAL SURFACE-FAULT RUPTURE SENSITIVE AREA OVERLAY ZONE - SALT LAKE CITY NORTH QUADRANGLE



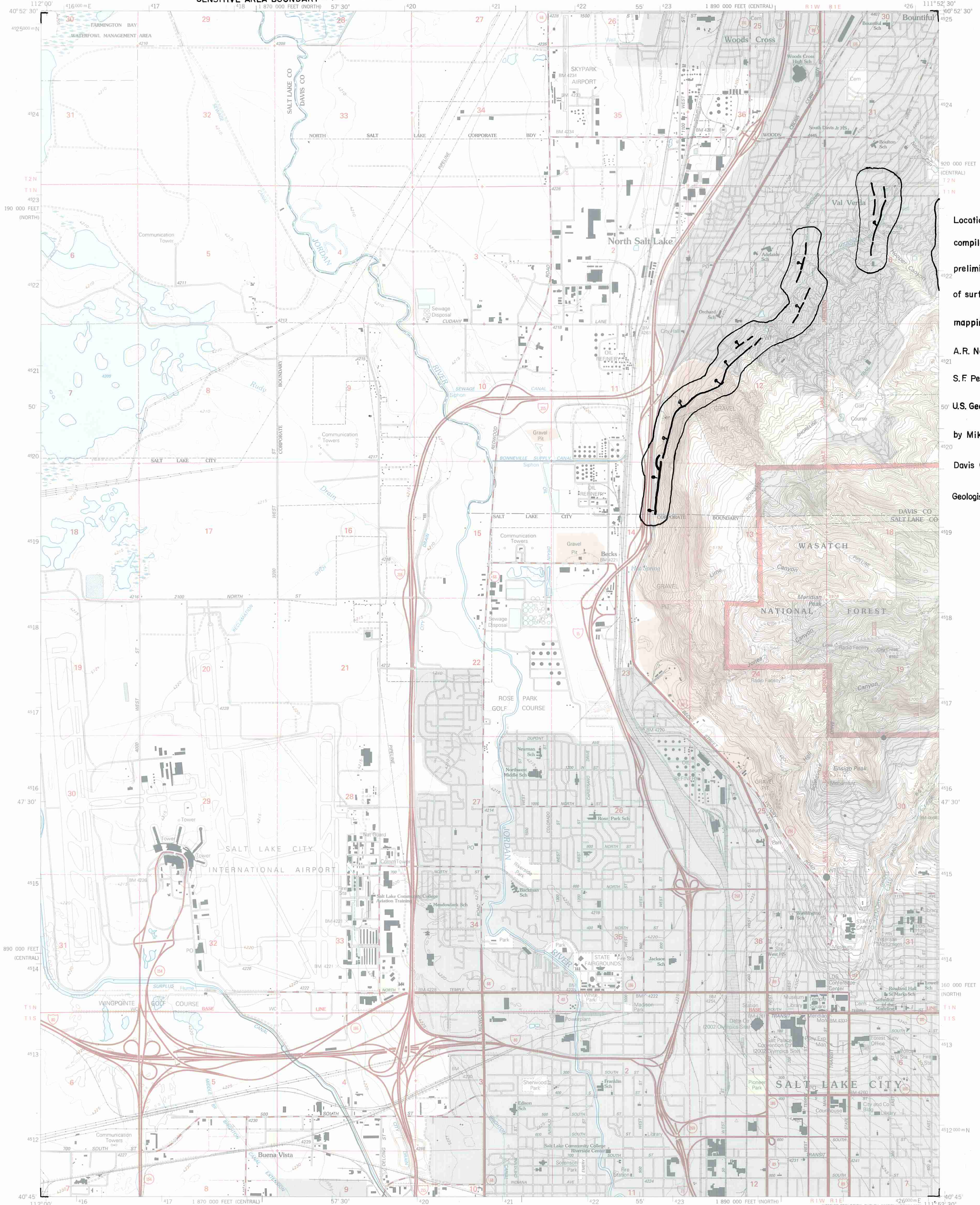
U.S. DEPARTMENT OF THE INTERIOR
U.S. GEOLOGICAL SURVEY

EXPLANATION



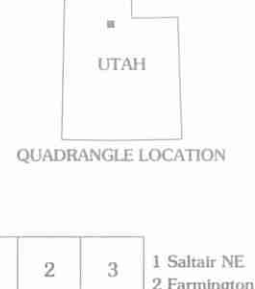
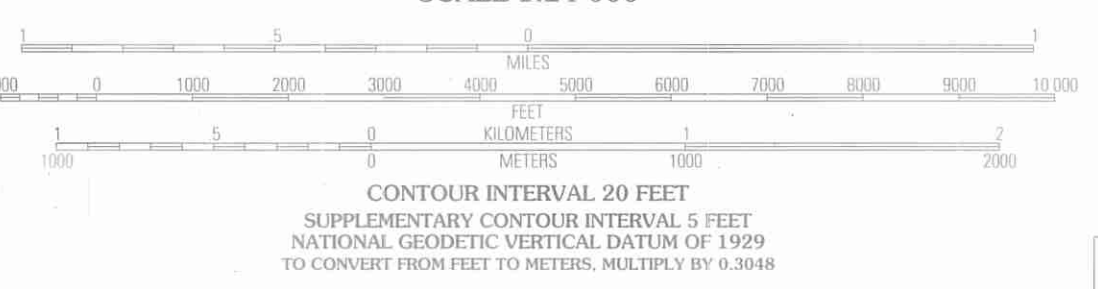
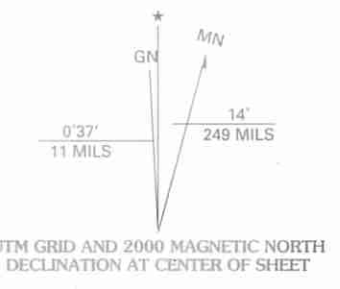
U.S. DEPARTMENT OF AGRICULTURE
FOREST SERVICE

SALT LAKE CITY NORTH QUADRANGLE
UTAH
7.5-MINUTE SERIES (TOPOGRAPHIC)



Location of faults compiled from preliminary drafts of surficial geologic mapping by A.R. Nelson and S.F. Personius, U.S. Geological Survey, by Mike Lowe, Davis County Geologist, 1989.

Produced by the United States Geological Survey 1975
Revision by USDA Forest Service 1998
Topography compiled 1950. Planimetry derived from imagery taken 1997 and other sources. Public Land Survey System and survey control current as of 1998.
North American Datum of 1927 (NAD 27). Projection: Utah coordinate system, central zone (Lambert conformal conic).
10 000-foot ticks: Utah coordinate system central and north zones
Blue 1000-meter Universal Transverse Mercator ticks, zone 12
North American Datum of 1983 (NAD 83) is shown by dashed corner ticks
The values of the shift between NAD 27 and NAD 83 for 7.5-minute intersections are obtainable from National Geodetic Survey NADCON software
Non-National Forest System lands within the National Forest
Inholdings may exist in other National or State reservations
This map is not a legal land line or ownership document. Public lands are subject to change and leasing, and may have access restrictions; check with local offices. Obtain permission before entering private lands
Landmark buildings verified 2000



HIGHWAYS AND ROADS	
Interstate	Red double line with shield
U.S. Highway	Red line with shield
State Highway	Red line with shield
County Highway	Red line with shield
National Forest, suitable for passenger cars	Red line with shield
National Forest, suitable for high clearance vehicles	Red line with shield
National Forest Trail	Red line with shield
Primary highway	Red line
Secondary highway	Red line
Light-duty road	Red line
Composition: Unspecified	Red line
Paved	Red line
Gravel	Red line
Dirt	Red line
Unimproved; 4 wheel drive	Red line
Trail	Red line
Gate; Barrier	Red line

ADJOINING 7.5 QUADRANGLES	
1	1 Saltair NE
2	2 Farmington
3	3 Bountiful Peak
4	4 Saltair
5	5 Fort Douglas
6	6 Magna
7	7 Salt Lake City South
8	8 Sugar House

THIS MAP COMPLIES WITH NATIONAL MAP ACCURACY STANDARDS
FOR SALE BY U.S. GEOLOGICAL SURVEY, P.O. BOX 25286, DENVER, COLORADO 80225
A FOLDER DESCRIBING TOPOGRAPHIC MAPS AND SYMBOLS IS AVAILABLE ON REQUEST



9 780607 972491

SALT LAKE CITY NORTH, UT
1998
NIMA 3665 IV SW-SERIES V897